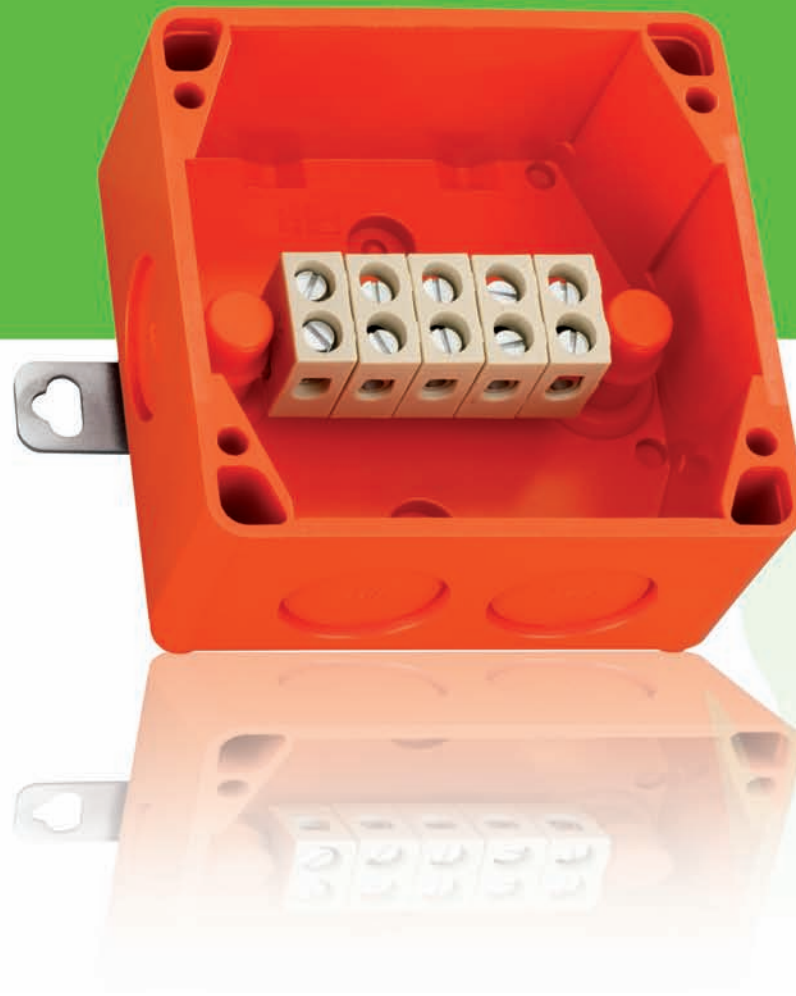




Ready for the future...

# Maintaining electrical function WKE 2 - 5

Connecting - Protecting - Distributing



FE180

F400

IP65  
IP54

E30-  
E90

FE180

F400

6-16<sup>2</sup>

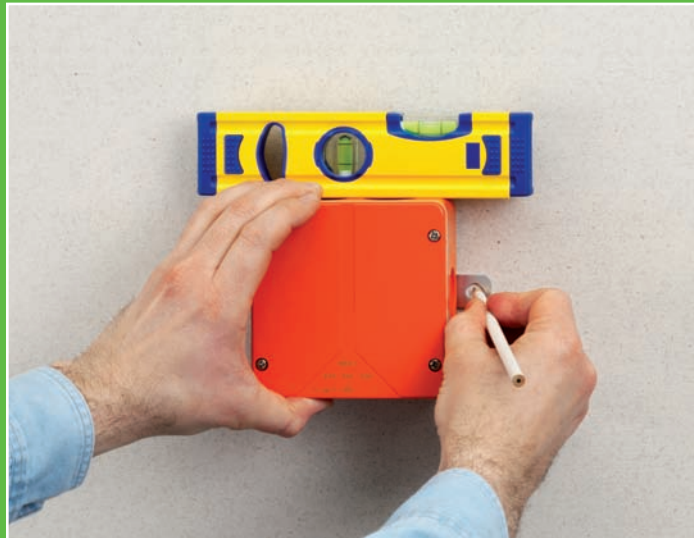
IK05



450V



WKE 2-5



1. MARK



2. DRILL (with standard 6-mm bit)



3. SCREW

FINISHED



WKE 2-5 installation...  
time savings of at least 50%

· Completely pre-assembled

*„Play it safe!“*

Only Spelsberg provides all necessary and legally prescribed tests and certificates (MPA, DiBt, VDE, AbZ, AbP) for maintaining electrical function per E30 - E90 as well as for FE180 and F400.



# Maintaining electrical function WKE AK 14 - 70

Connecting - Protecting - Distributing



IP65



IK10



400V



\* in preparation

# WKE AK 14-70



- VDE approved according to EN 61 439-1
- Small distributor, can be configured with type-tested components
- Approved according to DIN 4102 part 2 by MPA Dresden
- F90 (based on E90) maintained electrical function for protection of electrical equipment according to MLAR 2005
- An enclosure for all applications
- Up to 14 way units per switch row
- Fire load insulation F90 (based on I90) for protection of escape and rescue routes according to MLAR 2005

## „The series for every event!“

Regardless of whether the fire is inside or out, whatever type-tested components are in use, the WKE AK is always the correct and safe solution.



# Photovoltaics



IP65

6<sup>2</sup>

IK07

1000 V  
DC

15 A



PV 48



- Easy cabling extension saves time
- Greatest flexibility in PV installation
- Proven connection technology for maximum safety
- Unrestricted connectivity up to 6 mm<sup>2</sup>
- Safe investment since no special tools are needed  
=> no crimping, no shrinking
- Temperature range -40°C to +85°C
- Standard-compliant installation

## „A dream come true“

Still in its infancy about 20 years ago, our PV is now quite grown up: Our decades of experience and open technology combined with individualised planning and consulting make us the ideal partner for photovoltaics. From the PV 48 junction box to the GF generator isolation and terminal block enclosures to complete GTi switching systems for up to 1,250A.



**Industrial Quality  
S-Box**  
for extreme security



IP67

16<sup>2</sup>

IK09



450V



S-Box



- VDE approved according to DIN EN 60670
- Optimal protection against damage / vandalism (IK09)
- IP 67 protects electrical installations reliably against dust and temporary submersion in up to 1 m of water.
- Suitable for use of through-wired terminal blocks with screw connections
- Punches, kicks, attacks with tools, even fire – nothing can damage the S-Box.
- PinTorx screws (available as accessories) prevent unauthorised opening of the boxes.

*„Intelligent or merely interesting?“*

Spelsberg's Industrial Quality seal indicates intelligent solutions for electrical installation. From the **S-Box** junction box to **AKi** small distributors to **AKi** meter housings – highest **IQ** quality – Made in Germany.



## GTi Plus

Performance with a plus



IP65

IK08

690 V  
ACmax.  
1250 A-35°C  
-  
+80°C

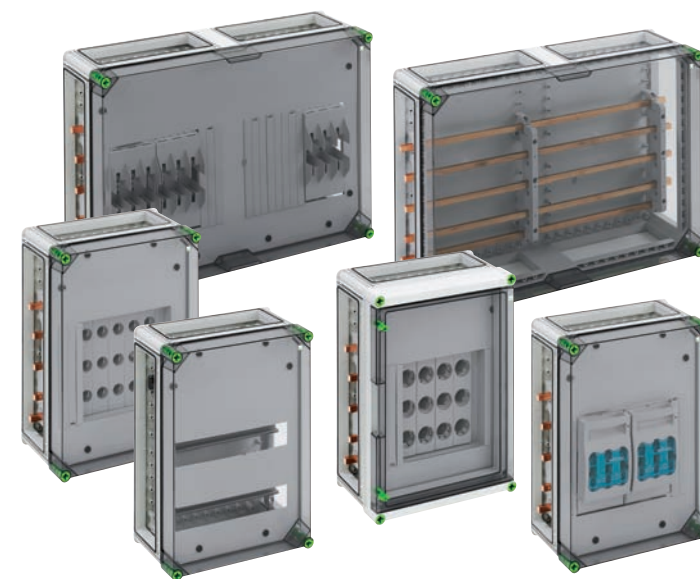
GTi Plus



- 40 % more room for connections
- Makes life easier with more room for wiring
- Space for fixtures such as terminal blocks, devices, electronics
- High flexibility for centralised and decentralised energy supply
- Fast installation
- Extremely robust

*„GTi always fits!“*

Highest quality and greatest flexibility in industrial environments. The modular design of GTi makes for simple and above all fast installation, whether for individual housings or complete switching systems, for PV systems or decentralised industrial distributors, or for 250 A, 400 A, 630 A or up to 1,250 A.





Electrical installation systems



Enclosure systems



Photovoltaic systems

- Junction boxes
- Maintaining electrical function
- Concrete installation systems
- Meter housings
- Small-scale distributors
- Fuse boxes
- Empty enclosures for industry
- ISO distributors up to 1.250 A

- Well over 500 standard enclosures made of plastic and aluminium
- Enclosures for terminal blocks
- Various cover heights
- Extensive range of accessories
- Drilled or milled openings
- Engraving, labelling
- Prototype design
- Series production

- Module junction boxes
- Generator isolation housings
- Enclosures for terminal blocks
- Junction boxes
- Meter housings
- NH fuse boxes
- NH protection switch disconnectors
- Busbar enclosures

**Günther Spelsberg GmbH + Co. KG**

Headquarter  
 Im Gewerbepark 1, D-58579 Schalksmühle  
 P.O. Box 15 20, D-58571 Schalksmühle  
 Phone: +49 (0) 23 55 / 8 92-0  
 Fax: +49 (0) 23 55 / 8 92-299  
 e-mail: [info@spelsberg.de](mailto:info@spelsberg.de)  
 Internet: [www.spelsberg.de](http://www.spelsberg.de)

Branch office  
 Vor dem Lohe 3, D-99628 Buttstädt  
 P.O. Box 30, D-99627 Buttstädt  
 Phone: +49 (0) 3 63 73 / 98-400  
 Fax: +49 (0) 3 63 73 / 98-499