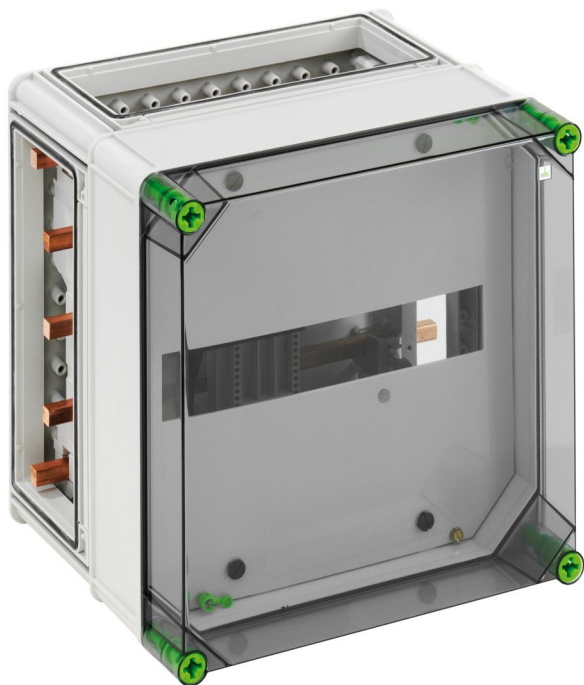


Distribution board

## GSi 2 VS KD-t



### GSi 2 VS KD-t

Distribution board

CUSTOMIZABLE

Productnumber: 02035201

Dimensions: 320 x 320 x 254 mm

Module enclosure - Industrial Quality -, 1-row, standard version sealable, with busbar system, 5-pole 250A, Busbar power supply 70/35 mm<sup>2</sup> and adapter for installing a selective main switch, masking and labelling strips, 3 x enclosure connectors (GGV)

with transparent hinged cover



## Technical Data

### electrical characteristics

Rated insulation voltage AC:	400 V
Protection class:	II
Type of protection:	IP65
Number of modules:	14

### Colours

Base unit colour:	grey
Cover colour:	transparent

### Dimensions

Width:	320 mm
Length:	320 mm
Height:	254 mm
Inner height:	157 mm

### Material characteristics

UV-resistant:	yes
Halogen free:	yes
Glow-wire flammability according to EN 60695-2-11:	960 °C
Industry quality:	yes

### mechanical properties

Type of fastening:	Surface mounting
Impact strength:	IK08
Cover screw torque:	2.5 Nm
Stackable:	yes

### Ambient conditions

max. relative humidity 25°C:	95 %
------------------------------	------

### Ambient conditions

max. relative humidity 40°C:	50 %
Min. ambient temperature:	-25 °C
Max. ambient temperature:	40 °C
24h ambient temperature:	35 °C
Installation location:	protected outdoor areas

### Material

Base unit material:	Polycarbonate
Cover material:	Polycarbonate
Sealing material:	Polyurethane
Cover screw material:	Polyamide, glass-fibre reinforced

## Accessories

[07251201 - GFS 12-m - Flange set](#)

[07505601 - GSV 56 - Busbar connector](#)