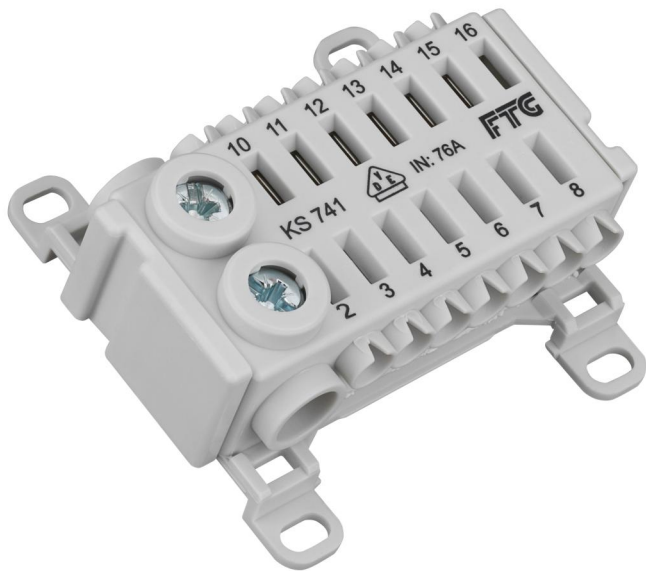


Terminal

## KLS 35-SL



### KLS 35-SL

**Terminal**

Productnumber: 07422601

Dimensions: 58 x 53 x 23,8 mm

PE/N terminal for installation in GTA distribution boards as additional terminals or for replacement

**1 module, Grey, 76 A, 2 x 25 mm<sup>2</sup> + 14 x 4 mm<sup>2</sup> for NS 35**

## Technical Data

### electrical characteristics

Rated operating voltage AC:	450 V
Rated current:	76 A
Number of poles:	1
shockproof:	Yes
Connection 1: Connection type:	Screws
Connection 1: Clamping points per pole:	2
Connection 1: Suitable for Cu conductors:	1
Connection 1: Connectable conductor cross-section, fine-wire with ferrule (min):	2.5 mm <sup>2</sup>
Connection 1: Connectable conductor cross-section, fine-wire with ferrule (max):	16 mm <sup>2</sup>
Connection 1: Connectable conductor cross-section, single-wire (min):	2.5 mm <sup>2</sup>
Connection 1: Connectable conductor cross-section, single-wire (max):	25 mm <sup>2</sup>
Connection 1: Connectable conductor cross-section, stranded (min):	2.5 mm <sup>2</sup>
Connection 1: Connectable conductor cross-section, stranded (max):	25 mm <sup>2</sup>
Connection 2: Connection type:	Screwless
Connection 2: Stripping length:	10 mm
Connection 2: Clamping points per pole:	14
Connection 2: Suitable for Cu conductors:	1
Connection 2: Connectable conductor cross-section, fine-wire with ferrule (min):	0.5 mm <sup>2</sup>
Connection 2: Connectable conductor cross-section, fine-wire with ferrule (max):	4 mm <sup>2</sup>
Connection 2: Connectable conductor cross-section, single-wire (min):	0.5 mm <sup>2</sup>
Connection 2: Connectable conductor cross-section, single-wire (max):	4 mm <sup>2</sup>

### Dimensions

Width:	58 mm
Length:	53 mm

## Dimensions

Height:	23.8 mm
---------	---------

### Material characteristics

Flammability class according with UL94:	V0
Glow-wire flammability according to EN 60695-2-11:	960 °C
Industry quality:	no