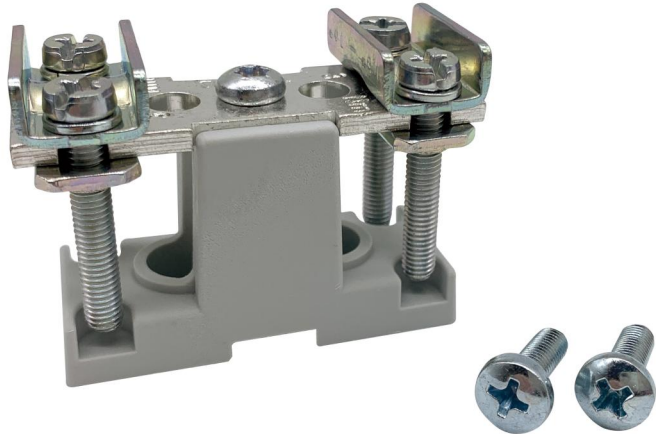


PEN terminal

GPE 0



GPE 0

PEN terminal

Productnumber: 07600101

Dimensions: 23 x 60 x 37 mm

for mounting plate

PE terminal NH 00 (clamp connection) for CU conductors 1x (1.5-70)mm / 2x 50mm, for mounting plate or retrofit set for GN 0

Technical Data

electrical characteristics

Rated operating voltage AC:	690 V
Rated operating voltage DC:	440 V
Rated current:	160 A
Number of poles:	1
shockproof:	No
Connection 1: Connection type:	Screws
Connection 1: Clamping points per pole:	2
Connection 1: Suitable for Cu conductors:	1
Connection 1: Suitable for Al conductors:	0
Connection 1: Connectable conductor cross-section, fine-wire with ferrule (min):	1.5 mm ²
Connection 1: Connectable conductor cross-section, fine-wire with ferrule (max):	70 mm ²
Connection 1: Connectable conductor cross-section, stranded (min):	1.5 mm ²
Connection 1: Connectable conductor cross-section, stranded (max):	70 mm ²

Dimensions

Width:	23 mm
Length:	60 mm
Height:	37 mm

Material characteristics

Glow-wire flammability according to EN 60695-2-11:	960 °C
Industry quality:	no

mechanical properties

Connection 1: Tightening moment:	3 Nm
----------------------------------	------

Material

Insulating body material:	Thermoplastic
---------------------------	---------------

Accessories

[07670001 - KP NH 00 - Prism terminal](#)