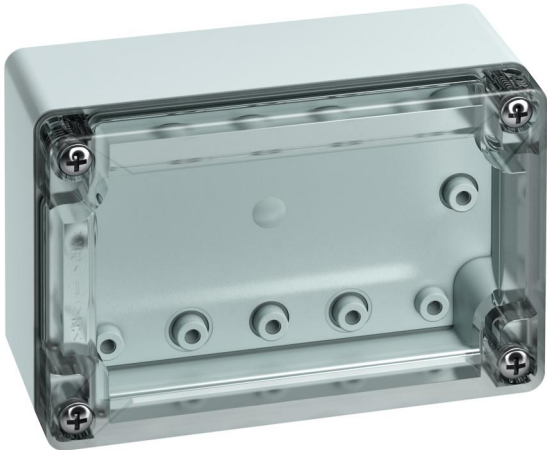


Empty enclosure

TG ABS 1208-6-to



TG ABS 1208-6-to

Empty enclosure

CUSTOMIZABLE

Productnumber: 10100401

Dimensions: 122 x 82 x 55 mm

Empty enclosure, protection class IP66/IP67, ABS, Ui=690V AC, Ui=1000V DC, internal fixing points, for standard installations indoors, with quick release

Box: ABS, grey, Lid: Polycarbonate, transparent, smooth sidewalls

**Accessories supplied:
Cover retainer, 4 fastening screws for accessories**



To industrial product:
<https://www.spelsberg.com/p/20100401>

Technical Data

electrical characteristics

Rated insulation voltage AC:	690 V
Rated insulation voltage DC:	1000 V
Protection class:	II
Type of protection:	IP66/IP67
UL Type Rating:	not specified

Colours

Base unit colour:	grey
Cover colour:	transparent

Dimensions

Width:	122 mm
Length:	82 mm
Height:	55 mm

Material characteristics

UV-resistant:	no
Halogen free:	yes
Flammability class according with UL94:	HB
Glow-wire flammability according to EN 60695-2-11:	650 °C
Industry quality:	no

mechanical properties

Type of fastening:	Wall/ceiling mounting
Impact strength:	IK07
Stackable:	yes
Type of top part:	Cover
Fastening:	internal fixing points

Ambient conditions

max. relative humidity 25°C:	95 %
max. relative humidity 40°C:	50 %
Min. ambient temperature:	-25 °C
Max. ambient temperature:	40 °C
24h ambient temperature:	35 °C
Installation location:	Indoors
Location:	Standard indoor installations

Material

Base unit material:	ABS
Cover material:	Polycarbonate
Sealing material:	Polyurethane
Cover screw material:	Stainless steel V2A

Accessories

[89601101 - MABF 65-2 - Mast/pipe fixing set](#)

[18200201 - TG ABL - External fixing lugs kit](#)

[18200401 - TG PST1 - Sealing kit](#)

[18200601 - TG DVS-42 - Cover retainer](#)

[18600401 - TG MPI-1208 - Mounting plate](#)

[18700401 - TG MPS-1208 - Mounting plate](#)

[19599501 - LFR - Stepped drill](#)

[19710701 - TS 15-104 - Standard rail](#)

[19810701 - NS 35-104 - Standard rail](#)

[26241201 - DAE M12 - Pressure balance element](#)