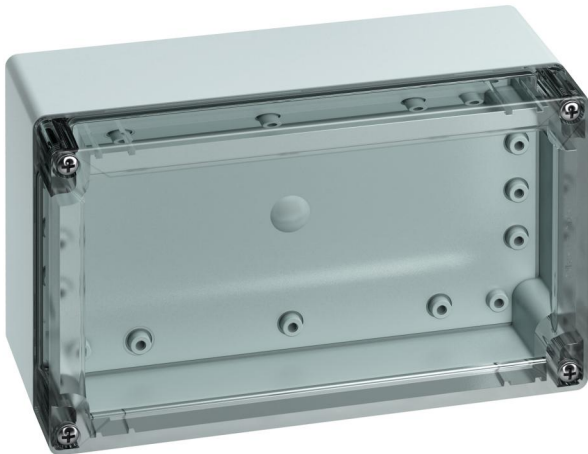


Empty enclosure

TG ABS 2012-9-to



TG ABS 2012-9-to

Empty enclosure

CUSTOMIZABLE

Productnumber: 10150801

Dimensions: 202 x 122 x 90 mm

Empty enclosure, protection class IP66/IP67, ABS, $U_i=690V$ AC, $U_i=1000V$ DC, internal fixing points, for standard installations indoors, with quick release

Box: ABS, grey, Lid: Polycarbonate, transparent, smooth sidewalls

Accessories supplied:
Cover retainer, 4 fastening screws for accessories



To industrial product:
<https://www.spelsberg.com/p/20150801>

Technical Data

electrical characteristics

Rated insulation voltage AC:	690 V
Rated insulation voltage DC:	1000 V
Protection class:	II
Type of protection:	IP66/IP67
UL Type Rating:	not specified

Colours

Base unit colour:	grey
Cover colour:	transparent

Dimensions

Width:	202 mm
Length:	122 mm
Height:	90 mm

Material characteristics

UV-resistant:	no
Halogen free:	yes
Flammability class according with UL94:	HB
Glow-wire flammability according to EN 60695-2-11:	650 °C
Industry quality:	no

mechanical properties

Type of fastening:	Wall/ceiling mounting
Impact strength:	IK07
Stackable:	yes
Type of top part:	Cover
Fastening:	internal fixing points

Ambient conditions

max. relative humidity 25°C:	95 %
max. relative humidity 40°C:	50 %
Min. ambient temperature:	-25 °C
Max. ambient temperature:	40 °C
24h ambient temperature:	35 °C
Installation location:	Indoors
Location:	Standard indoor installations

Material

Base unit material:	ABS
Cover material:	Polycarbonate
Sealing material:	Polyurethane
Cover screw material:	Stainless steel V2A

Accessories

[18200201 - TG ABL - External fixing lugs kit](#)

[18200101 - TG ISS - Interior hinge set](#)

[18200501 - TG PST2 - Sealing kit](#)

[18200701 - TG DVS-57 - Cover retainer](#)

[18600801 - TG MPI-2012 - Mounting plate](#)

[18700801 - TG MPS-2012 - Mounting plate](#)

[19599501 - LFR - Stepped drill](#)

[19718601 - TS 15-184 - Standard rail](#)

[19818601 - NS 35-184 - Standard rail](#)

[26241201 - DAE M12 - Pressure balance element](#)