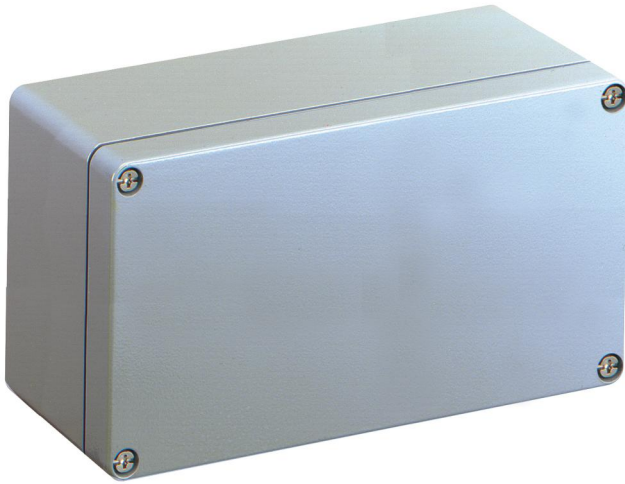


Empty enclosure

ALS 2011-9



ALS 2011-9

Empty enclosure

Productnumber: 15100601

Dimensions: 199 x 114 x 95 mm

Empty enclosure, protection class IP66, Aluminium, powder-coated painting, certified by UL (UL 508 & CSA C22.2 No. 14-13, UL 50 & CSA 22.2 No. 94.1-7 & UL 50E & CSA C22.2 No. 94.2-7), for installations in industrial environments and protected outdoor areas

Box: Aluminium, powder-coated painting, Lid: Aluminium, powder-coated painting, silver-grey, smooth sidewalls



Internal dimensions and mounting points correspond to the respective TK PS/PC dimension

Technical Data

electrical characteristics

| | |
|---------------------|--------|
| Protection class: | I |
| Type of protection: | IP66 |
| vented: | no |
| UL Type Rating: | 4X, 12 |

Colours

| | |
|---------------|-------------|
| Cover colour: | silver-grey |
|---------------|-------------|

Dimensions

| | |
|---------|--------|
| Width: | 199 mm |
| Length: | 114 mm |
| Height: | 95 mm |

Material characteristics

| | |
|-------------------|-----|
| UV-resistant: | yes |
| Halogen free: | yes |
| Industry quality: | yes |

mechanical properties

| | |
|--------------------|-----------------------|
| Type of fastening: | Wall/ceiling mounting |
| Impact strength: | IK09 |
| Flange variant: | no |
| Stackable: | no |
| Type of top part: | Cover |

Ambient conditions

| | |
|------------------------------|--------|
| max. relative humidity 25°C: | 95 % |
| max. relative humidity 40°C: | 50 % |
| Min. ambient temperature: | -35 °C |
| Max. ambient temperature: | 75 °C |

Ambient conditions

| | |
|--------------------------|--|
| 24h ambient temperature: | 60 °C |
| Installation location: | protected outdoor areas |
| Location: | Installations in industrial environments and protected outdoor areas |

Material

| | |
|---------------------|-----------------------------------|
| Base unit material: | Aluminium, powder-coated painting |
| Cover material: | Aluminium, powder-coated painting |
| Sealing material: | Silicone |

Certificates

| | |
|------------|--|
| Test mark: | UL (UL 508 & CSA C22.2 No. 14-13, UL 50 & CSA 22.2 No. 94.1-7 & UL 50E & CSA C22.2 No. 94.2-7) |
|------------|--|

Accessories

[15400601 - AL ALS-gro - External attachment set](#)

[15421001 - AL ASS - External hinge set](#)

[19500601 - TK MPI-1811 - Mounting plate](#)

[19700601 - TK MPS-1811 - Mounting plate](#)

[19715401 - TS 15-154 - Standard rail](#)

[19814401 - NS 35-144 - Standard rail](#)