

Channel installation box

KD 2 70/44 F1 gr

KD 2 70/44 F1 gr

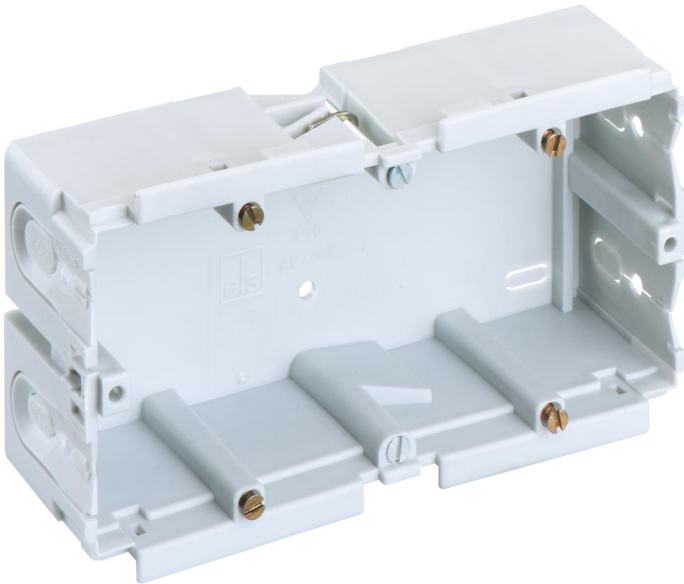
Channel installation box

Productnumber: 36210401

Dimensions: 80 x 142 x 44 mm

Channel installation box, rated insulation voltage:
400V AC, certified by VDE (DIN EN 50085-1 (VDE
0604-1))

**2-way, for installation in Gewiss and Rehau wall
trunking/device installation ducts**



Technical Data

electrical characteristics

Rated insulation voltage AC:	400 V
------------------------------	-------

Colours

Cover colour:	grey
---------------	------

Dimensions

Width:	80 mm
--------	-------

Length:	142 mm
---------	--------

Height:	44 mm
---------	-------

Material characteristics

Halogen free:	no
---------------	----

Industry quality:	no
-------------------	----

Ambient conditions

max. relative humidity 25°C:	100 %
------------------------------	-------

max. relative humidity 40°C:	50 %
------------------------------	------

Min. ambient temperature:	-25 °C
---------------------------	--------

Max. ambient temperature:	40 °C
---------------------------	-------

24h ambient temperature:	35 °C
--------------------------	-------

Installation location:	Indoors
------------------------	---------

Material

Base unit material:	Polypropylene
---------------------	---------------

Cover material:	Polypropylene
-----------------	---------------

Certificates

Test mark:	VDE (DIN EN 50085-1 (VDE 0604-1))
------------	-----------------------------------
