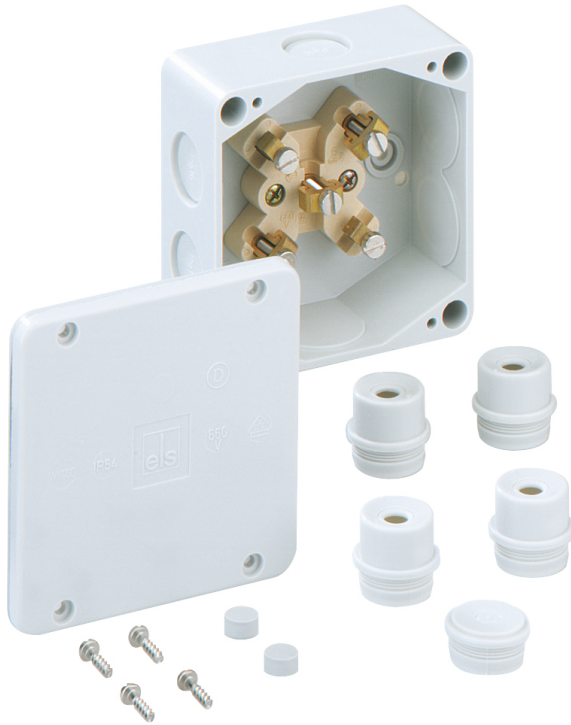


Junction box

WK 060-6²

This product is outdated. To the successor product: <https://www.spelsberg.com/p/80642001>



WK 060-6²

Junction box

Productnumber: 40640601

Dimensions: 100 x 100 x 50 mm

Junction box, protection class IP54, nominal cross-section 6 mm², U_i=690 V AC, certified by VDE (DIN EN 60670-1/-22 (VDE 0606-1/-22)), knockouts, M25, (7 side), internal fixing points, for standard indoor installations

grey, with screw terminal, 5-pole - 6 mm² (5 x 2.5² / 5 x 4² / 4 x 6²)

Accessories supplied:

4 Attachment bushes IP54 M25 sealing range 9 - 18,5 mm, 1 sealing plugs M25



Technical Data

electrical characteristics

Rated insulation voltage AC:	690 V
Max. conductor cross section:	6 mm ²
Protection class:	II
Type of protection:	IP54
UL Type Rating:	not specified

Colours

Base unit colour:	grey
Cover colour:	grey

Dimensions

Width:	100 mm
Length:	100 mm
Height:	50 mm

Material characteristics

UV-resistant:	no
Halogen free:	yes
Flammability class according with UL94:	V0
Glow-wire flammability according to EN 60695-2-11:	960 °C
Industry quality:	no

mechanical properties

Type of fastening:	Wall/ceiling mounting
Impact strength:	IK05
Sealable:	no
Cover screw torque:	1.8 Nm
Fastening:	internal fixing points

Ambient conditions

max. relative humidity 25°C:	95 %
max. relative humidity 40°C:	50 %
Min. ambient temperature:	-25 °C
Max. ambient temperature:	40 °C
24h ambient temperature:	35 °C
Installation location:	Indoors

Material

Base unit material:	Duroplast
Cover material:	Duroplast
Sealing material:	Thermoplastic elastomer
Cover screw material:	Steel

Certificates

Test mark:	VDE (DIN EN 60670-1/-22 (VDE 0606-1/-22))
------------	---

Accessories

[22742501 - KVR M25-MGM - Cable gland](#)

Cable gland

