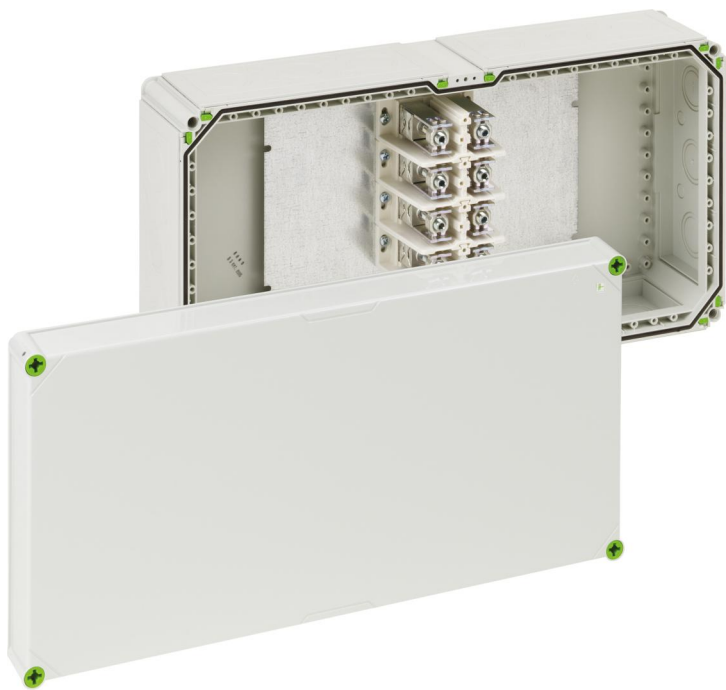


Junction box

## Abox-i 2400-240<sup>2</sup>/4



### Abox-i 2400-240<sup>2</sup>/4

Junction box

CUSTOMIZABLE

Productnumber: 49049401

Dimensions: 640 x 320 x 179 mm

Junction box, protection class IP65, nominal cross-section 240 mm<sup>2</sup>, U<sub>i</sub>=690 V AC, knockouts, M16/M40/M50, (30 side), internal fixing points, for installations in industrial environments and protected outdoor areas

**grey, with special screw terminal for conductor entry on top, 4-pole - 240<sup>2</sup> (25 to 240 mm<sup>2</sup>, CU/AL)**



## Technical Data

### electrical characteristics

Rated insulation voltage AC:	690 V
Max. conductor cross section:	240 mm <sup>2</sup>
Protection class:	II
Type of protection:	IP65
Number of poles:	4
UL Type Rating:	not specified

### Colours

Base unit colour:	grey
Cover colour:	grey

### Dimensions

Width:	640 mm
Length:	320 mm
Height:	179 mm

### Material characteristics

UV-resistant:	yes
Halogen free:	yes
Glow-wire flammability according to EN 60695-2-11:	960 °C
Industry quality:	yes

### mechanical properties

Type of fastening:	Wall/ceiling mounting
Impact strength:	IK08
Sealable:	yes
Cover screw torque:	1.7 Nm
Fastening:	internal fixing points

## Ambient conditions

max. relative humidity 25°C:	95 %
max. relative humidity 40°C:	50 %
Min. ambient temperature:	-35 °C
Max. ambient temperature:	80 °C
24h ambient temperature:	60 °C
Installation location:	protected outdoor areas

## Material

Base unit material:	Polycarbonate
Cover material:	Polycarbonate, glass-fibre reinforced
Sealing material:	Polyurethane
Cover screw material:	Polyamide, glass-fibre reinforced

## Accessories

[07614001 - AKL 140 - Terminal](#)

[07303201 - GKE 32 - Cable entry](#)

[01040101 - GTI 1-g - Empty enclosure](#)

[07220001 - GFL 20 - Flange](#)

[07300301 - GZE 3 - Strain relief](#)

[07280301 - GFG 3 - Flange bar](#)

[07030001 - GAB-ES - External fixing lug](#)

[22742501 - KVR M25-MGM - Cable gland](#)

[22743201 - KVR M32-MGM - Cable gland](#)

[22744001 - KVR M40-MGM - Cable gland](#)

[22745001 - KVR M50-MGM - Cable gland](#)

## Cable gland

