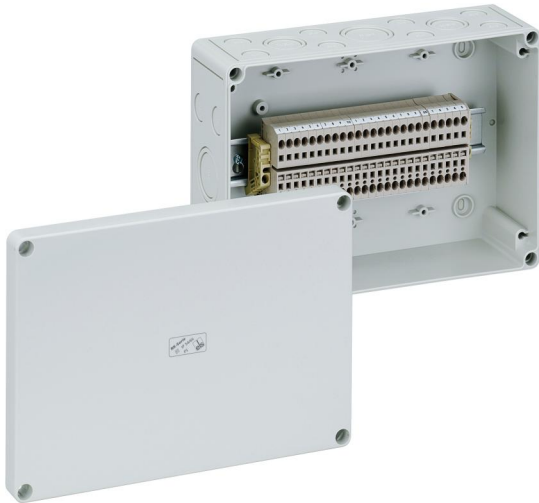


Terminal block enclosure

## RK 4/25 SL-25x4<sup>2</sup>



### RK 4/25 SL-25x4<sup>2</sup>

Terminal block enclosure

CUSTOMIZABLE

Productnumber: 61002501

Dimensions: 254 x 180 x 90 mm

Terminal block enclosure, protection class IP54/IP66, nominal cross-section 4 mm<sup>2</sup>, Ui=400V AC, Polystyrene, internal fixing points, for standard indoor installations

**equipped with 25 screwless terminals 4mm<sup>3</sup>, (type Weidmüller ZDU 4)**

**Accessories supplied:**

**8 Attachment bushes IP54 M20 sealing range 8 - 13,5 mm, 2 Attachment bushes IP54 M25 sealing range 9 - 18,5 mm, 1 Attachment bushes IP54 M32 sealing range 13 - 23 mm**



To industrial product:

<https://www.spelsberg.com/p/63002501>

## Technical Data

### electrical characteristics

|                               |                   |
|-------------------------------|-------------------|
| Rated insulation voltage AC:  | 400 V             |
| Max. conductor cross section: | 4 mm <sup>2</sup> |
| Protection class:             | II                |
| Type of protection:           | IP54/IP66         |
| UL Type Rating:               | not specified     |

### Dimensions

|         |        |
|---------|--------|
| Width:  | 254 mm |
| Length: | 180 mm |
| Height: | 90 mm  |

### Material characteristics

|  |        |
|--|--------|
| UV-resistant:                                      | no     |
| Halogen free:                                      | yes    |
| Flammability class according with UL94:            | HB     |
| Glow-wire flammability according to EN 60695-2-11: | 650 °C |
| Industry quality:                                  | no     |

### mechanical properties

|                    |                        |
|--------------------|------------------------|
| Type of fastening: | Wall/ceiling mounting  |
| Impact strength:   | IK07                   |
| Sealable:          | yes                    |
| Fastening:         | internal fixing points |

### Ambient conditions

|                              |        |
|------------------------------|--------|
| max. relative humidity 25°C: | 95 %   |
| max. relative humidity 40°C: | 50 %   |
| Min. ambient temperature:    | -25 °C |
| Max. ambient temperature:    | 40 °C  |

### Ambient conditions

|                          |         |
|--------------------------|---------|
| 24h ambient temperature: | 35 °C   |
| Installation location:   | Indoors |

### Material

|                       |                                   |
|-----------------------|-----------------------------------|
| Base unit material:   | Polystyrene                       |
| Cover material:       | Polystyrene                       |
| Sealing material:     | Polyurethane                      |
| Cover screw material: | Polyamide, glass-fibre reinforced |

## Accessories

[19000101 - HBA - Mounting material](#)

[19000501 - ASS-gro - External hinge set](#)

[19010001 - VSG - Padlock kit](#)

[19202001 - KS M20 - Combi set](#)

[19202501 - KS M25 - Combi set](#)

[19202601 - KS M25-gro - Combi set](#)

[19203201 - KS M32 - Combi set](#)

[19400101 - TK ABL - External fixing lugs kit](#)

## Cable gland

