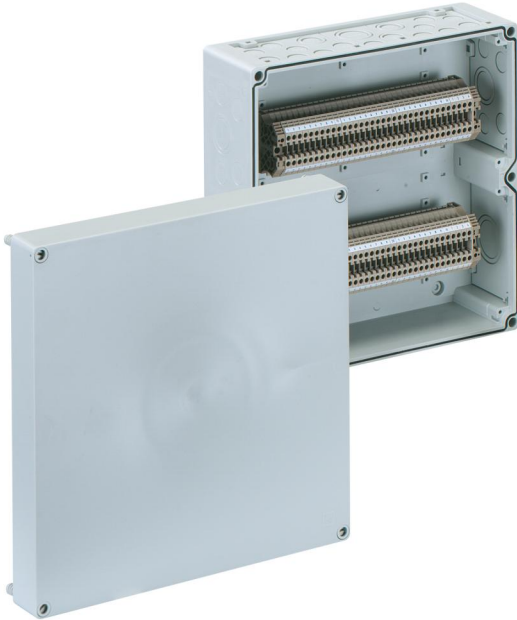


Terminal block enclosure

RKA 4/68 SL-68x4²



RKA 4/68 SL-68x4²

Terminal block enclosure

CUSTOMIZABLE

Productnumber: 62006801

Dimensions: 300 x 300 x 132 mm

Terminal block enclosure, protection class IP65, nominal cross-section 4 mm², Ui=400V AC, Polystyrene, internal fixing points, for standard indoor installations

equipped with 68 screwless terminals 4mm³, (type Weidmüller ZDU 4)

Accessories supplied:

10 Double-membrane seal IP66 M20 sealing range 7 - 12 mm, 2 Double-membrane seals IP66 M25 sealing range 9 - 16 mm, 2 Double-membrane seal M32 sealing range 14 - 21 mm, 1 Double-membrane seal IP66 M40 sealing range 19 - 28 mm

IP65

4²

IK07



400V

AC



Technical Data

electrical characteristics

| | |
|-------------------------------|-------------------|
| Rated insulation voltage AC: | 400 V |
| Max. conductor cross section: | 4 mm ² |
| Protection class: | II |
| Type of protection: | IP65 |
| UL Type Rating: | not specified |

Dimensions

| | |
|---------|--------|
| Width: | 300 mm |
| Length: | 300 mm |
| Height: | 132 mm |

Material characteristics

| | |
|--|--------|
| UV-resistant: | no |
| Halogen free: | yes |
| Flammability class according with UL94: | HB |
| Glow-wire flammability according to EN 60695-2-11: | 650 °C |
| Industry quality: | no |

mechanical properties

| | |
|--------------------|------------------------|
| Type of fastening: | Wall/ceiling mounting |
| Impact strength: | IK07 |
| Sealable: | yes |
| Fastening: | internal fixing points |

Ambient conditions

| | |
|------------------------------|--------|
| max. relative humidity 25°C: | 95 % |
| max. relative humidity 40°C: | 50 % |
| Min. ambient temperature: | -25 °C |
| Max. ambient temperature: | 40 °C |

Ambient conditions

| | |
|--------------------------|---------|
| 24h ambient temperature: | 35 °C |
| Installation location: | Indoors |

Material

| | |
|-----------------------|-----------------------------------|
| Base unit material: | Polystyrene |
| Cover material: | Polystyrene |
| Sealing material: | Polyurethane |
| Cover screw material: | Polyamide, glass-fibre reinforced |

Accessories

[19000501 - ASS-gro - External hinge set](#)

[19010001 - VSG - Padlock kit](#)

[19202001 - KS M20 - Combi set](#)

[19202501 - KS M25 - Combi set](#)

[19202601 - KS M25-gro - Combi set](#)

[19203201 - KS M32 - Combi set](#)

[19302501 - KST M25-17 - Combi connector](#)

[19302601 - KST M25-33 - Combi connector](#)

[19303201 - KST M32 - Combi connector](#)

[59110001 - AK KS-IP30 - Combi set](#)

[79100101 - AK KS-IP65 - Combi set](#)

[79300401 - AK ABL-ES - External fixing lugs](#)

Cable gland

