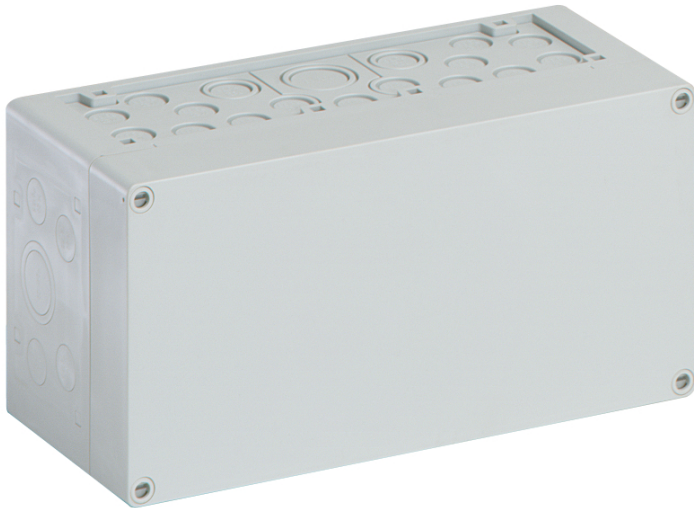


Empty enclosure

## AKi 1-g



### AKi 1-g

Empty enclosure

CUSTOMIZABLE

Productnumber: 74140101

Dimensions: 300 x 150 x 132 mm

Empty enclosure, protection class IP65, Polycarbonate,  $U_i=690V$  AC,  $U_i=1000V$  DC, internal fixing points, for installations in industrial environments and protected outdoor areas

**Box: Polycarbonate, Lid: Polycarbonate, glass-fibre reinforced, grey, knockouts, M20/M25/M32/M40, (46 side)**

Accessories supplied:

**10 Double-membrane seal IP66 M20 sealing range 7 - 12 mm, 2 Double-membrane seals IP66 M25 sealing range 9 - 16 mm, 2 Double-membrane seal M32 sealing range 14 - 21 mm, 1 Double-membrane seal IP66 M40 sealing range 19 - 28 mm**



## Technical Data

### electrical characteristics

Rated insulation voltage AC:	690 V
Rated insulation voltage DC:	1000 V
Protection class:	II
Type of protection:	IP65
UL Type Rating:	not specified

### Colours

Cover colour:	grey
---------------	------

### Dimensions

Width:	300 mm
Length:	150 mm
Height:	132 mm

### Material characteristics

UV-resistant:	yes
Halogen free:	yes
Flammability class according with UL94:	V2
Glow-wire flammability according to EN 60695-2-11:	960 °C
Industry quality:	yes

### mechanical properties

Type of fastening:	Wall/ceiling mounting
Impact strength:	IK08
Sealable:	yes
Cover screw torque:	1.2 Nm
Stackable:	yes
Type of top part:	Cover
Fastening:	internal fixing points

## Ambient conditions

max. relative humidity 25°C:	95 %
max. relative humidity 40°C:	50 %
Min. ambient temperature:	-35 °C
Max. ambient temperature:	80 °C
24h ambient temperature:	60 °C
Installation location:	protected outdoor areas
Location:	Installations in industrial environments and protected outdoor areas

## Material

Base unit material:	Polycarbonate
Cover material:	Polycarbonate, glass-fibre reinforced
Sealing material:	Polyurethane
Cover screw material:	Polyamide, glass-fibre reinforced

## Accessories

[19000501 - ASS-gro - External hinge set](#)

[56741201 - KF 12 - Hinged window](#)

[79500101 - AK MPI 1 - Mounting plate](#)

[79503001 - NS35-216/3 - Standard rail](#)

[79031701 - AK 14 PEN-SL - Terminal rails](#)

[79032701 - AK 28 PEN-SL - Terminal rails](#)

[79031801 - AK N-SL - Terminal rails](#)

## Cable gland

