

Terminal block enclosure  
**AKi-R 4/34**

This product is outdated. To the successor product: <https://www.spelsberg.com/p/74303401>

## AKi-R 4/34

### Terminal block enclosure

CUSTOMIZABLE

Productnumber: 74203401

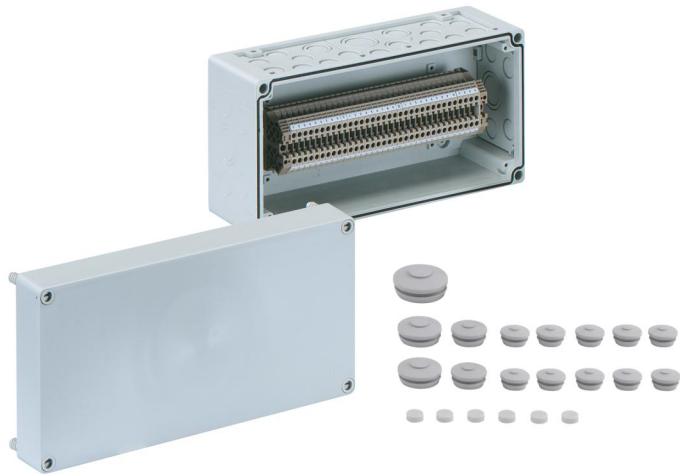
Dimensions: 300 x 150 x 132 mm

Terminal block enclosure, protection class IP65, nominal cross-section 4 mm<sup>2</sup>, Ui=400V AC, Polycarbonate, internal fixing points, for installations in industrial environments and protected outdoor areas

**equipped with 34 screw terminals 4mm<sup>3</sup>, (type Weidmüller WDU 4)**

#### Accessories supplied:

**10 Double-membrane seal IP66 M20 sealing range 7 - 12 mm, 2 Double-membrane seals IP66 M25 sealing range 9 - 16 mm, 2 Double-membrane seal M32 sealing range 14 - 21 mm, 1 Double-membrane seal IP66 M40 sealing range 19 - 28 mm**



IP65

4<sup>2</sup>

IK08



400V

AC



## Technical Data

### electrical characteristics

Rated insulation voltage AC:	400 V
Max. conductor cross section:	4 mm <sup>2</sup>
Protection class:	II
Type of protection:	IP65
UL Type Rating:	not specified

### Dimensions

Width:	300 mm
Length:	150 mm
Height:	132 mm

### Material characteristics

UV-resistant:	yes
Halogen free:	yes
Flammability class according with UL94:	V2
Glow-wire flammability according to EN 60695-2-11:	960 °C
Industry quality:	yes

### mechanical properties

Type of fastening:	Wall/ceiling mounting
Impact strength:	IK08
Sealable:	yes
Fastening:	internal fixing points

### Ambient conditions

max. relative humidity 25°C:	95 %
max. relative humidity 40°C:	50 %
Min. ambient temperature:	-35 °C
Max. ambient temperature:	80 °C

### Ambient conditions

24h ambient temperature:	60 °C
Installation location:	protected outdoor areas

### Material

Base unit material:	Polycarbonate
Cover material:	Polycarbonate, glass-fibre reinforced
Sealing material:	Polyurethane
Cover screw material:	Polyamide, glass-fibre reinforced

## Accessories

[19000501 - ASS-gro - External hinge set](#)

[19010001 - VSG - Padlock kit](#)

[19302501 - KST M25-17 - Combi connector](#)

[19302601 - KST M25-33 - Combi connector](#)

[19303201 - KST M32 - Combi connector](#)

[59110001 - AK KS-IP30 - Combi set](#)

[79100101 - AK KS-IP65 - Combi set](#)

[79300401 - AK ABL-ES - External fixing lugs](#)

## Cable gland

