

Plug clamps

## KLS L 1/14-SL

### KLS L 1/14-SL

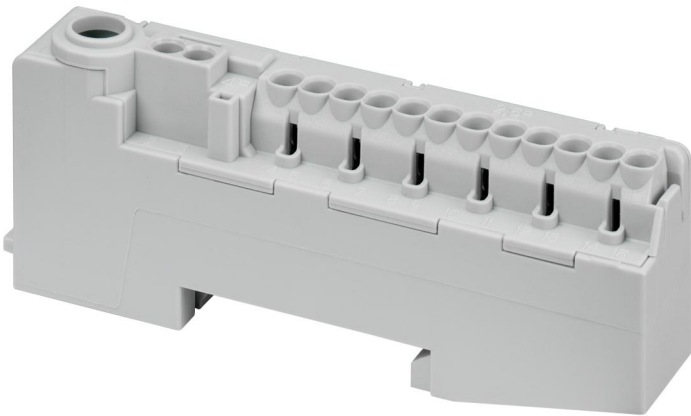
#### Plug clamps

Productnumber: 79032001

Dimensions: 94 x 35 x 17 mm

Terminal, for rigid conductors, 15 clamping points, 1 screwable clamping point 25 mm<sup>2</sup> (1.5-25 mm<sup>2</sup> re, 1-16 mm<sup>2</sup> rf+AD), 2 screwless clamping points 4 mm<sup>2</sup> (1-4 mm<sup>2</sup> re, 1-2.5 mm<sup>2</sup> rf+AD), 12 screwless clamping points 2.5 mm<sup>2</sup> (1-2.5 mm<sup>2</sup> re, 0.75-1.5 mm<sup>2</sup> rf+AD), for assembly on 35 mm DIN mounting rail, for current carrying capacity of 76 A

**Grey**



## Technical Data

### electrical characteristics

Rated operating voltage AC:	400 V
Number of poles:	1
shockproof:	Yes
Connection 1: Connection type:	Screws
Connection 1: Strip length:	10 mm
Connection 1: Suitable for Cu conductors:	1
Connection 1: Suitable for Al conductors:	0
Connection 1: Connectable conductor cross-section, fine-wire without ferrule (min):	1.5 mm <sup>2</sup>
Connection 1: Connectable conductor cross-section, fine-wire without ferrule (max):	16 mm <sup>2</sup>
Connection 1: Connectable conductor cross-section, fine-wire with ferrule (min):	1.5 mm <sup>2</sup>
Connection 1: Connectable conductor cross-section, fine-wire with ferrule (max):	16 mm <sup>2</sup>
Connection 1: Connectable conductor cross-section, single-wire (min):	1.5 mm <sup>2</sup>
Connection 1: Connectable conductor cross-section, single-wire (max):	25 mm <sup>2</sup>
Connection 1: Connectable conductor cross-section, stranded (min):	1.5 mm <sup>2</sup>
Connection 1: Connectable conductor cross-section, stranded (max):	25 mm <sup>2</sup>
Connection 2: Connection type:	Screwless
Connection 2: Clamping points per pole:	15
Connection 2: Suitable for Al conductors:	0
Connection 2: Connectable conductor cross-section, fine-wire without ferrule (min):	0.75 mm <sup>2</sup>
Connection 2: Connectable conductor cross-section, fine-wire without ferrule (max):	2.5 mm <sup>2</sup>
Connection 2: Connectable conductor cross-section, fine-wire with ferrule (min):	0.75 mm <sup>2</sup>
Connection 2: Connectable conductor cross-section, fine-wire with ferrule (max):	2.5 mm <sup>2</sup>

### electrical characteristics

Connection 2: Connectable conductor cross-section, single-wire (min):	1 mm <sup>2</sup>
Connection 2: Connectable conductor cross-section, single-wire (max):	4 mm <sup>2</sup>

### Dimensions

Width:	94 mm
Length:	35 mm
Height:	17 mm

### Material characteristics

Glow-wire flammability according to EN 60695-2-11:	960 °C
Industry quality:	no

### mechanical properties

Connection 1: Tightening moment:	3 Nm
----------------------------------	------