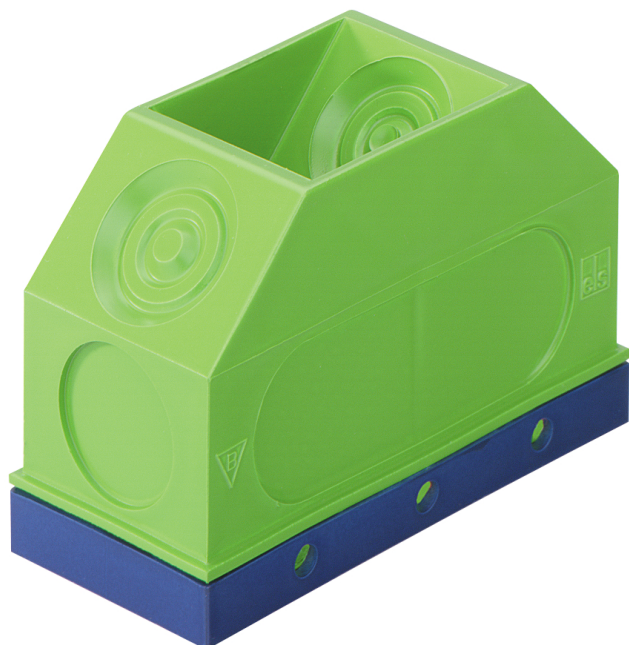


Dome box

**KUK**



## KUK

### Dome box

Productnumber: 97055001

Dimensions: 90 x 40 x 55 mm

Dome box, as a ceiling outlet and wall-ceiling connection in cast-in-place concrete or large panel construction, protection class IP00, rated insulation voltage: 400V AC, Halogen free, Number of 45° insertions: 8

**adhesive fixing or nail installation, membrane for perforation, sealing range M16 - M25**



## Technical Data

### electrical characteristics

Rated insulation voltage AC:	400 V
Type of protection:	IP00
Suitable for:	Concrete construction
UL Type Rating:	not specified

### Dimensions

Width:	90 mm
Length:	40 mm
Height:	55 mm

### Material characteristics

Halogen free:	yes
Flammability class according with UL94:	HB
Glow-wire flammability according to EN 60695-2-11:	650 °C
Industry quality:	no

### mechanical properties

Type of fastening:	adhesive fixing or nail installation
--------------------	--------------------------------------

### Ambient conditions

max. relative humidity 25°C:	- %
max. relative humidity 40°C:	50 %
Min. ambient temperature:	-25 °C
Max. ambient temperature:	40 °C
24h ambient temperature:	35 °C

### Material

Base unit material:	Polypropylene
Cover material:	Polypropylene

## Accessories

[19599501 - LFR - Stepped drill](#)

[97022001 - RVB 20 - Conduit coupling](#)

[97022501 - RVB 25 - Conduit coupling](#)

[97023201 - RVB 32 - Conduit coupling](#)

[97024001 - RVB 40 - Conduit coupling](#)

[97810001 - IBT LZA-OE - Hole punch](#)

[97811801 - IBT LZA-18 - Hole punch](#)

[97812301 - IBT LZA-23 - Hole punch](#)

[97891401 - IBT STE-LZA/14 - Punch set](#)

[97891801 - IBT STE-LZA/18 - Punch set](#)

[97892301 - IBT STE-LZA/23 - Punch set](#)

[97915501 - WED - Expansion mandrel](#)

**Cable gland**

$6x \leq \emptyset 22,5 \text{ mm}$

