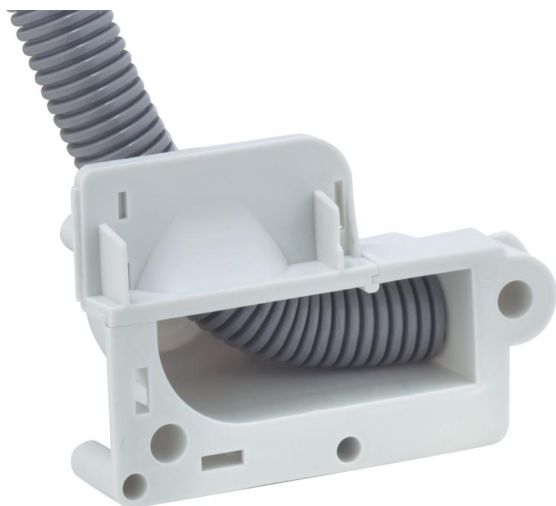


Universal outlet

UVA 90



UVA 90

Universal outlet

Productnumber: 97071601

Dimensions: 126 x 86 x 57 mm

Universal outlet, for simple conduit transfers in walls and ceilings or for routing conduits beneath plasterwork. Entries for conduits up to M25. suitable for adhesive fixing and opposing shuttering (when using support spar technology, please take strict note that: (support spar length = wall thickness minus 2 cm), rated insulation voltage: 400V AC, Halogen free

adhesive fixing or nail installation, sealing range M20 - M25, support spar compatible



Technical Data

electrical characteristics

Rated insulation voltage AC:	400 V
Suitable for:	Concrete construction

Dimensions

Width:	126 mm
Length:	86 mm
Height:	57 mm

Material characteristics

Halogen free:	yes
Flammability class according with UL94:	HB
Glow-wire flammability according to EN 60695-2-11:	650 °C
Industry quality:	no

mechanical properties

Type of fastening:	adhesive fixing or nail installation
--------------------	--------------------------------------

Ambient conditions

max. relative humidity 25°C:	- %
max. relative humidity 40°C:	50 %
Min. ambient temperature:	-25 °C
Max. ambient temperature:	40 °C
24h ambient temperature:	35 °C

Material

Base unit material:	Polypropylene
Cover material:	Polypropylene

Accessories

[97022001 - RVB 20 - Conduit coupling](#)

[97022501 - RVB 25 - Conduit coupling](#)

[97953801 - U 71 BSK-K - blank base](#)

[97953901 - U 71 BSK - blank base](#)

[19599501 - LFR - Stepped drill](#)

[97023201 - RVB 32 - Conduit coupling](#)

[97024001 - RVB 40 - Conduit coupling](#)

[97810001 - IBT LZA-OE - Hole punch](#)

[97811801 - IBT LZA-18 - Hole punch](#)

[97812301 - IBT LZA-23 - Hole punch](#)

[97891401 - IBT STE-LZA/14 - Punch set](#)

[97891801 - IBT STE-LZA/18 - Punch set](#)

[97892301 - IBT STE-LZA/23 - Punch set](#)

[97915501 - WED - Expansion mandrel](#)

[97924001 - NAS-AL - IBT Accessories](#)

[97924201 - NA-AL - IBT Accessories](#)

[97924301 - NA-AL/gl - IBT Accessories](#)

[97926001 - ANSW - IBT Accessories](#)

[97953601 - STH-ELP - Cartridge insert](#)

[97957001 - STH 70 - Support spar](#)

[97959001 - STH 90 - Support spar](#)

[97960001 - STH 100 - Support spar](#)

[97961001 - STH 110 - Support spar](#)

[97963001 - STH 130 - Support spar](#)

[97964001 - STH 140 - Support spar](#)

[97965001 - STH 150 - Support spar](#)

[97967001 - STH 170 - Support spar](#)

[97969001 - STH 190 - Support spar](#)

[97973001 - STH 230 - Support spar](#)

[97974001 - STH 240 - Support spar](#)

[97979001 - STH 290 - Support spar](#)