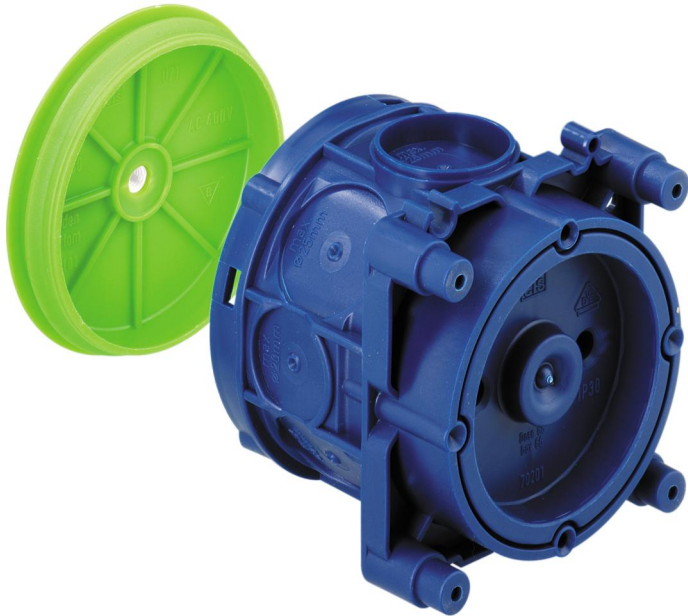


Ceiling junction box

U 71 DVD-2



U 71 DVD-2

Ceiling junction box

Productnumber: 97106601

Dimensions: 71 x 71 x 79 mm

Ceiling junction box, 4 screw bosses with a 60 mm screw spacing, with M5 threaded bushing (load capacity 10 kg) to take a ceiling hook, combinable with normal 71 mm spacing, fully insulated cable transition, suitable for all types of formwork and opposing formwork, protection class IP30, rated insulation voltage: 400V AC, Halogen free

magnet and nail installation, membrane for perforation, sealing range M16 - M25, support spar compatible



Technical Data

electrical characteristics

Rated insulation voltage AC:	400 V
Type of protection:	IP30
Suitable for:	Concrete construction
UL Type Rating:	not specified

Colours

Cover colour:	other
---------------	-------

Dimensions

Width:	71 mm
Length:	71 mm
Height:	79 mm

Material characteristics

Halogen free:	yes
Flammability class according with UL94:	HB
Glow-wire flammability according to EN 60695-2-11:	650 °C
Industry quality:	no

mechanical properties

Type of fastening:	magnet and nail installation
--------------------	------------------------------

Ambient conditions

max. relative humidity 25°C:	- %
max. relative humidity 40°C:	50 %
Min. ambient temperature:	-25 °C
Max. ambient temperature:	40 °C
24h ambient temperature:	35 °C

Material

Base unit material:	Polypropylene
Cover material:	Polypropylene

Accessories

- [97925001 - HFL - IBT Accessories](#)
- [97929901 - HM-UNI - IBT Accessories](#)
- [97910001 - VD 75 - sealing plate](#)
- [97911701 - DH 75-M5 - ceiling hook](#)
- [19599501 - LFR - Stepped drill](#)
- [97022001 - RVB 20 - Conduit coupling](#)
- [97022501 - RVB 25 - Conduit coupling](#)
- [97023201 - RVB 32 - Conduit coupling](#)
- [97024001 - RVB 40 - Conduit coupling](#)
- [97810001 - IBT LZA-OE - Hole punch](#)
- [97811801 - IBT LZA-18 - Hole punch](#)
- [97812301 - IBT LZA-23 - Hole punch](#)
- [97891401 - IBT STE-LZA/14 - Punch set](#)
- [97891801 - IBT STE-LZA/18 - Punch set](#)
- [97892301 - IBT STE-LZA/23 - Punch set](#)
- [97910501 - ES-10 - Installation screw](#)
- [97910601 - ES-18 - Installation screw](#)
- [97910701 - ES-25 - Installation screw](#)
- [97915501 - WED - Expansion mandrel](#)
- [97920501 - IBT ST - Plug](#)
- [97924001 - NAS-AL - IBT Accessories](#)
- [97924201 - NA-AL - IBT Accessories](#)
- [97924301 - NA-AL/gl - IBT Accessories](#)
- [97926001 - ANSW - IBT Accessories](#)
- [97953601 - STH-ELP - Cartridge insert](#)
- [97957001 - STH 70 - Support spar](#)
- [97959001 - STH 90 - Support spar](#)
- [97960001 - STH 100 - Support spar](#)
- [97961001 - STH 110 - Support spar](#)
- [97963001 - STH 130 - Support spar](#)
- [97964001 - STH 140 - Support spar](#)
- [97965001 - STH 150 - Support spar](#)
- [97967001 - STH 170 - Support spar](#)

[97969001 - STH 190 - Support spar](#)

[97973001 - STH 230 - Support spar](#)

[97974001 - STH 240 - Support spar](#)

[97979001 - STH 290 - Support spar](#)

Cable gland

$6x \leq \varnothing 25 \text{ mm}$
 $2x \leq \varnothing 20 \text{ mm}$

