

Enclosure

IBTronic XL H 185 F

IBTronic XL H 185 F

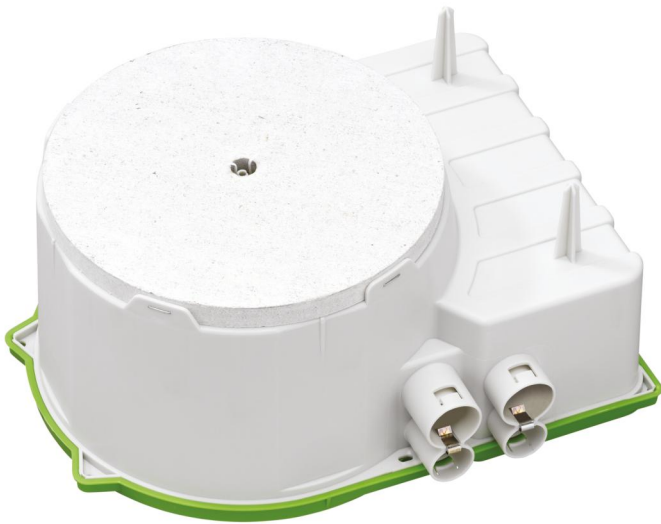
Enclosure

Productnumber: 97660401

Dimensions: 255 x 280 x 130 mm

Enclosure, for prefabricated construction, for the installation of VDE-tested luminaires in accordance with DIN EN 60598 (VDE 0711), and with F-identification or MM-identification, maximum installation depth LV luminaires: 105 mm, HV lights: 110 mm, lamp output max. 50W / LED 25W, with additional connection space, (e.g. for installing an electronic safety transformer up to max. 150 VA), protection class IPX4, rated insulation voltage: 400V AC, Halogen free

Outlet aperture: Fermacell® plasterboard, variable to max. Ø 150 mm, 8 combi-conduit entries 4 x M20, 4 x M25, integrated conduit stopper and strain relief for conduits M20, M25, adhesive fixing or nail installation, integrated conduit adapter, sealing range M20 - M25



Technical Data

electrical characteristics

Rated insulation voltage AC:	400 V
Type of protection:	IPX4
Suitable for:	Concrete construction

Dimensions

Width:	255 mm
Length:	280 mm
Height:	130 mm

Material characteristics

Halogen free:	yes
Flammability class according with UL94:	HB
Glow-wire flammability according to EN 60695-2-11:	650 °C
Industry quality:	no

mechanical properties

Type of fastening:	adhesive fixing or nail installation
--------------------	--------------------------------------

Ambient conditions

max. relative humidity 25°C:	- %
max. relative humidity 40°C:	50 %
Min. ambient temperature:	-25 °C
Max. ambient temperature:	40 °C
24h ambient temperature:	35 °C

Material

Base unit material:	Polypropylene
Cover material:	Polypropylene

Accessories

[97980201 - FPD 185 - Fermacell® plasterboard](#)