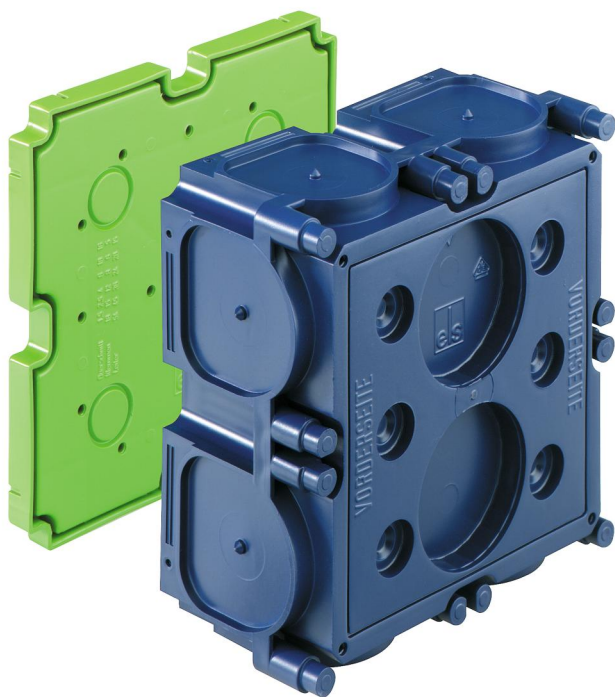


Mounting box
K3 EK



K3 EK

Mounting box

Productnumber: 98000201

Dimensions: 142 x 142 x 70 mm

Mounting box, prepared to take the WK terminal blocks 2.5 - 25 mm², suitable to take a 20-pole telephone terminal strip or as a telephone continuity box to DIN 47614-615, combinable, protection class IP30, rated insulation voltage: 400V AC, certified by VDE (DIN EN 50085-1 (VDE 0604-1)), Halogen free

for Spelsberg HM-UNI (97929901), magnet and nail installation, membrane for perforation, sealing range M16 - M50, support spar compatible



Technical Data

electrical characteristics

Rated insulation voltage AC:	400 V
Type of protection:	IP30
Suitable for:	Concrete construction
UL Type Rating:	not specified

Colours

Cover colour:	other
---------------	-------

Dimensions

Width:	142 mm
Length:	142 mm
Height:	70 mm

Material characteristics

Halogen free:	yes
Flammability class according with UL94:	HB
Glow-wire flammability according to EN 60695-2-11:	650 °C
Industry quality:	no

mechanical properties

Type of fastening:	magnet and nail installation
--------------------	------------------------------

Ambient conditions

max. relative humidity 25°C:	- %
max. relative humidity 40°C:	50 %
Min. ambient temperature:	-25 °C
Max. ambient temperature:	40 °C
24h ambient temperature:	35 °C

Material

Base unit material:	Polypropylene
Cover material:	Polypropylene

Certificates

Test mark:	VDE (DIN EN 50085-1 (VDE 0604-1))
------------	-----------------------------------

Accessories

- [97925001 - HFL - IBT Accessories](#)
- [97929901 - HM-UNI - IBT Accessories](#)
- [98010001 - K3 VD - sealing plate](#)
- [19599501 - LFR - Stepped drill](#)
- [97022001 - RVB 20 - Conduit coupling](#)
- [97022501 - RVB 25 - Conduit coupling](#)
- [97023201 - RVB 32 - Conduit coupling](#)
- [97024001 - RVB 40 - Conduit coupling](#)
- [97810001 - IBT LZA-OE - Hole punch](#)
- [97811801 - IBT LZA-18 - Hole punch](#)
- [97812301 - IBT LZA-23 - Hole punch](#)
- [97891401 - IBT STE-LZA/14 - Punch set](#)
- [97891801 - IBT STE-LZA/18 - Punch set](#)
- [97892301 - IBT STE-LZA/23 - Punch set](#)
- [97915501 - WED - Expansion mandrel](#)
- [97924001 - NAS-AL - IBT Accessories](#)
- [97924201 - NA-AL - IBT Accessories](#)
- [97924301 - NA-AL/gl - IBT Accessories](#)
- [97926001 - ANSW - IBT Accessories](#)
- [97953601 - STH-ELP - Cartridge insert](#)
- [97957001 - STH 70 - Support spar](#)
- [97959001 - STH 90 - Support spar](#)
- [97960001 - STH 100 - Support spar](#)
- [97961001 - STH 110 - Support spar](#)
- [97963001 - STH 130 - Support spar](#)
- [97964001 - STH 140 - Support spar](#)
- [97965001 - STH 150 - Support spar](#)
- [97967001 - STH 170 - Support spar](#)
- [97969001 - STH 190 - Support spar](#)
- [97973001 - STH 230 - Support spar](#)
- [97974001 - STH 240 - Support spar](#)
- [97979001 - STH 290 - Support spar](#)

Cable gland

