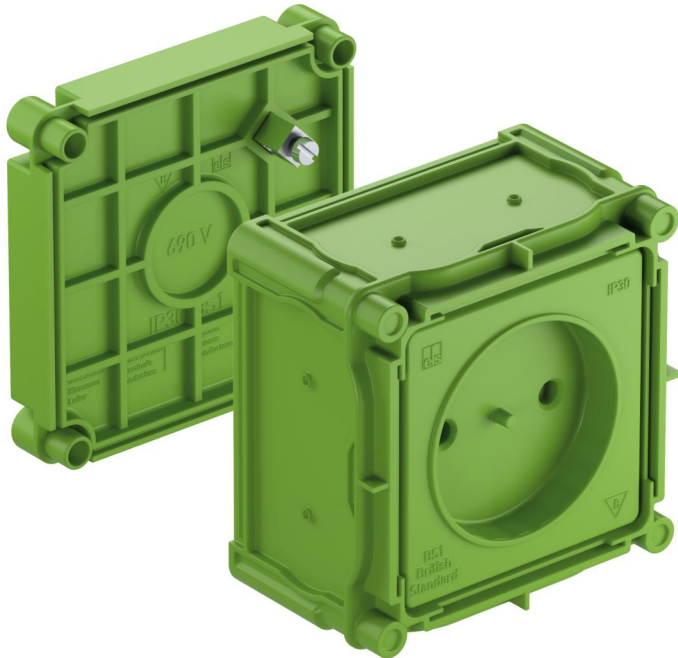


Equipment installation box

BS 1



BS 1

Equipment installation box

Productnumber: 98700101

Dimensions: 86 x 86 x 60 mm

Equipment installation box, 1-way box for installing "British Standard" equipment; screw spacing 60.3 mm (2 3/8 inch.), protection class IP30, rated insulation voltage: 400V AC, Halogen free

for Spelsberg HM-UNI (97929901), magnet and nail installation, membrane for perforation, sealing range M16 - M32, support spar compatible

Accessories supplied:
Earthing screw



Technical Data

electrical characteristics

Rated insulation voltage AC:	400 V
Type of protection:	IP30
Suitable for:	Concrete construction
UL Type Rating:	not specified

Colours

Base unit colour:	green
Cover colour:	green

Dimensions

Width:	86 mm
Length:	86 mm
Height:	60 mm
Inner length:	68 mm
Inner width:	68 mm
Inner height:	37 mm

Material characteristics

Halogen free:	yes
Flammability class according with UL94:	HB
Glow-wire flammability according to EN 60695-2-11:	650 °C
Industry quality:	no

mechanical properties

Type of fastening:	magnet and nail installation
--------------------	------------------------------

Ambient conditions

max. relative humidity 25°C:	- %
max. relative humidity 40°C:	50 %

Ambient conditions

Min. ambient temperature:	-25 °C
Max. ambient temperature:	40 °C
24h ambient temperature:	35 °C

Material

Base unit material:	Plastic
Cover material:	Polypropylene

Accessories

[97924001 - NAS-AL - IBT Accessories](#)

[97924301 - NA-AL/gl - IBT Accessories](#)

[97929901 - HM-UNI - IBT Accessories](#)

[97443101 - BS 1-BSK - blank base](#)

[97412001 - BS MBR - Assembly bridge](#)

[97413501 - BS ES-40 - Installation screw](#)

[97415001 - BS ES-50 - Installation screw](#)

[97410001 - BS 1 VD - sealing plate](#)

[19599501 - LFR - Stepped drill](#)

[97413001 - BS ES-30 - Installation screw](#)

[97810001 - IBT LZA-OE - Hole punch](#)

[97811801 - IBT LZA-18 - Hole punch](#)

[97812301 - IBT LZA-23 - Hole punch](#)

[97915501 - WED - Expansion mandrel](#)

[98791101 - VCBS - IBT Accessories](#)

Cable gland

